



VELIKO TURNOVO, THE CITY OF KINGS



THE
LONG
HOUSE

THE LONG HOUSE



A small, luxury riverside development in the heart of Veliko Turnovo of four stylish three and four - bed roomed town houses all with terraces and unbeatable views of the 13th century citadel.

The Long House development is designed around the concept of modern living within a medieval setting in an increasingly vibrant and popular area. The Long House is arranged as four town houses overlooking the Yantra River, with fantastic views of the medieval castle. This development offers excellent accommodation suitable for holidays, letting and full time residence.

Throughout the building the specification is first rate. Wood flooring enhances the traditional feel of the houses. Modern fully-fitted kitchens and bathrooms, with high quality appliances, set a new standard for luxury development in the Stara Planina Mountains. Washing machines, fridge-freezers and ceramic hobs are all included.

Specification

Kitchen

Solid Wood finish
Fan-assisted oven
Ceramic four-ring electric hob
Stainless Steel extractor hood
Fridge Freezer
Washing machine
Tile flooring

Open Plan Living Area

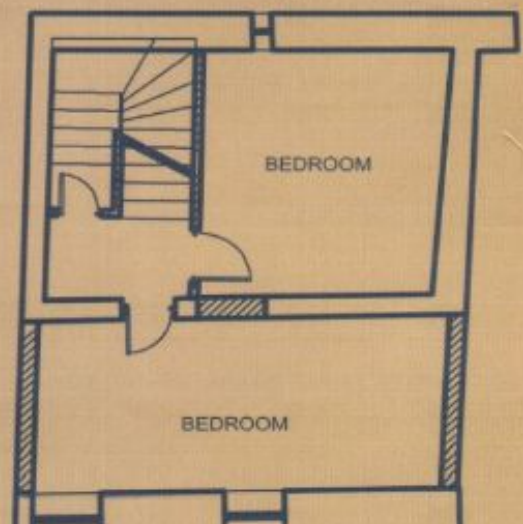
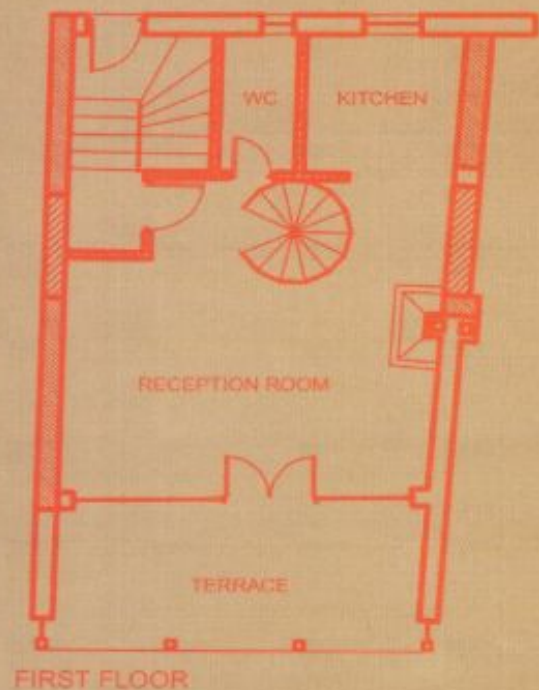
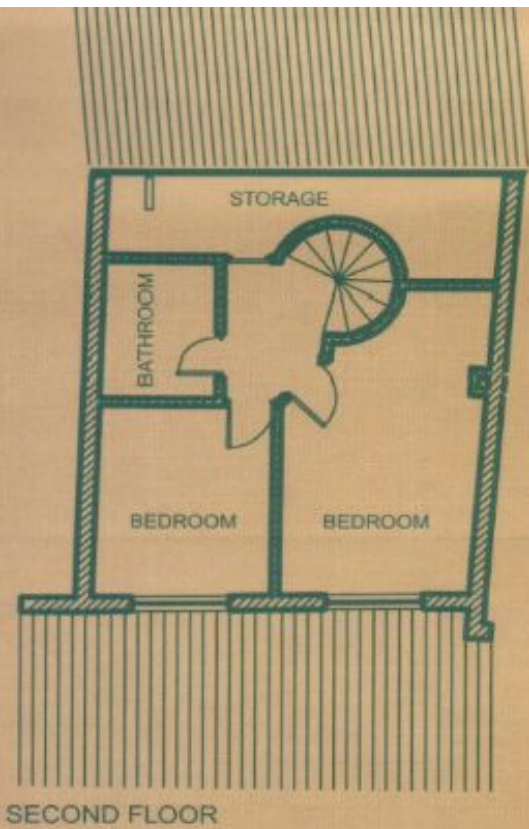
Wood flooring
Traditional Fire Place
Riverside Terrace

Bathrooms

White contemporary-style
suites
Chrome fittings
Baths and shower facilities

General

Solid wood doors and
windows
Double glazing throughout
Facilities for internet,
telephone
Entry Phone System
Cable and security systems
Wall mounted electric
radiators
Contemporary lighting scheme



THE LONG HOUSE



The Long House is conveniently placed in the heart of the ancient capital, Veliko Turnovo, with its many restaurants, bars and unique cultural heritage. The International airports of Bucharest, Sofia and Varna are all within 2.5 hours offering a wide range of travel options.

This is a rare opportunity to purchase a town house in an unbeatable setting. Veliko Turnovo is one of the most beautiful locations in Bulgaria. The stunning views of the buildings are all National Monuments of Culture and will never be developed or altered. All houses have superb river views towards the collection of medieval churches and ancient citadel which symbolize the city of Kings. It has good access to Arbanassi and all the tourist facilities of the surrounding Stara Planina Mountains.



Artists impression of Long House

For further information on this unique development please contact below:

Important notice. This brochure has been produced for illustrative purposes only. Information contained herein is provided for guidance and will not form any part or any contract or constitute any offer, representation or warranty. The developer reserves the right to alter the specification without notice. All areas, measurements, layouts and distances referred to are given as guide only. Room dimensions have tolerances and should not be used to determine measurements for appliances or items of furniture.